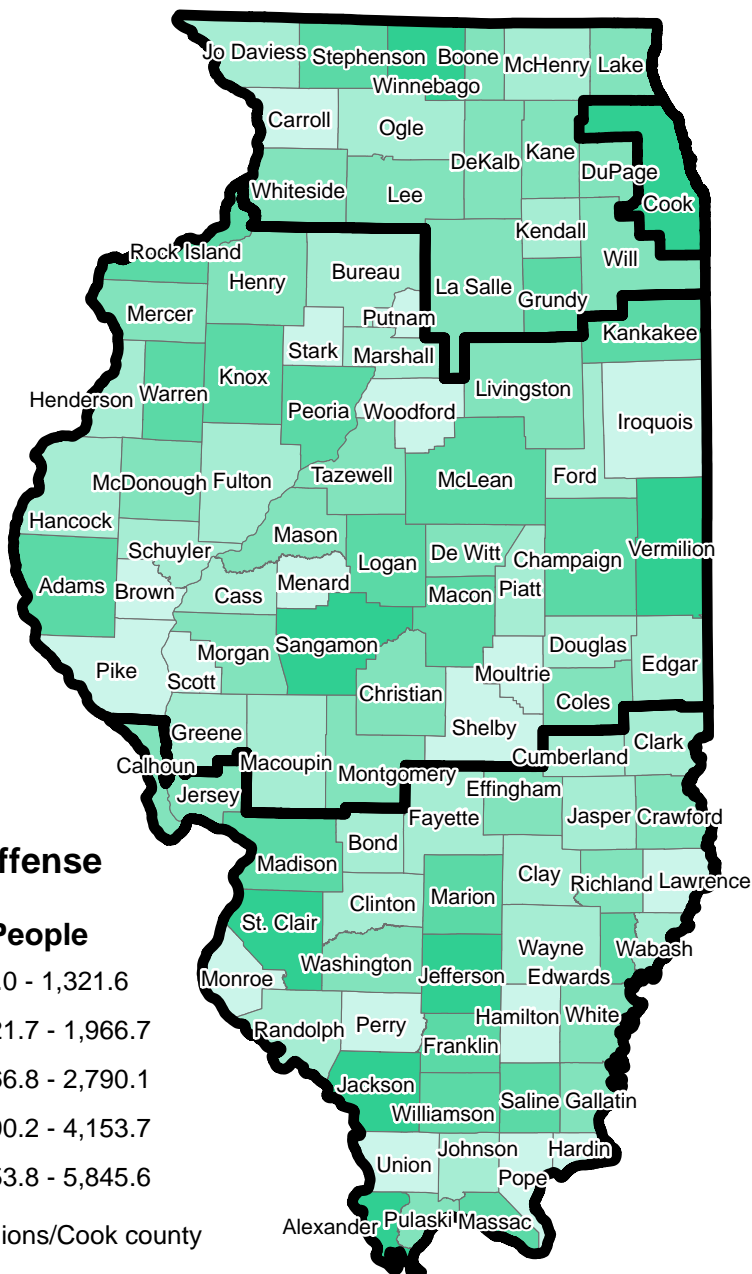
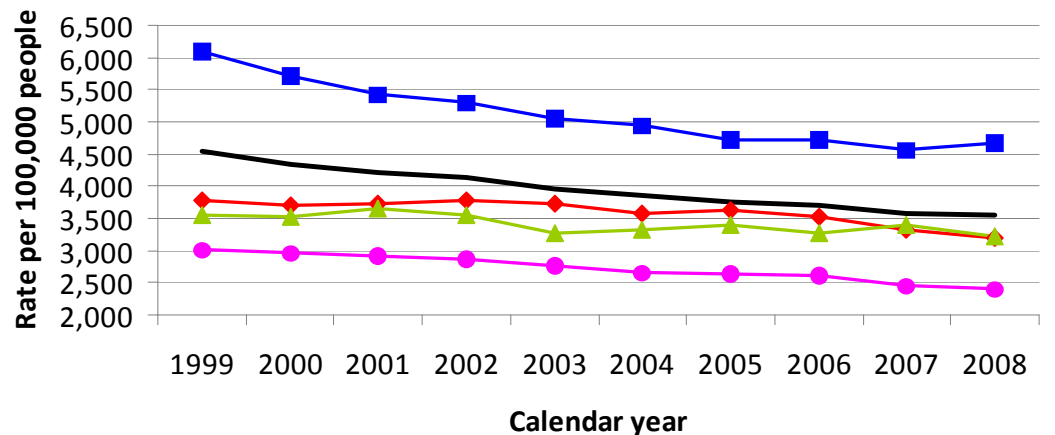


I-UCR Index Offense Rate per 100,000 People CY2008



I-UCR Index Offense Rate per 100,000 People CY1999 – 2008



- Illinois — Northern w/o Cook — Central — Southern — Cook
- Index offenses are those crimes known to police in eight major categories: murder, criminal sexual assault, robbery and aggravated assault (which together make up the Violent Index category); burglary, theft, motor vehicle theft, and arson (which together make up the Property Index category).
- In 2008, there were 456,359 Index offenses reported in Illinois. The map above shows the distribution of these offenses by county, in terms of the rate per 100,000 persons.
- Fifty-four percent of all Index offenses were reported in Cook County, 22 percent were reported in the Northern region outside Cook County, 16 percent were reported in the Central region, and nine percent were reported in the Southern region. (See map for regions).
- In Illinois, the reported Index offense rate decreased 22 percent in Illinois from 1999 through 2008 (from 4,544 per 100,000 persons in 1999 to 3,553 per 100,000 persons in 2008).
- As a comparison, the reported Index offense rate in the United States excluding arson decreased 14 percent, over the same time period (from 4,267 per 100,000 persons in 1999 to 3,667 per 100,000 persons in 2008).
- In 2008, the total reported Index offense rate for Cook County was 4,672 per 100,000 persons; 2,412 per 100,000 persons in the Northern region outside Cook County; 3,194 per 100,000 persons in the Central region; and 3,227 per 100,000 persons in the Southern region.
- From 1999 through 2008, the total reported Index offense rate decreased 23 percent in Cook County, 20 percent in the Northern region outside Cook County, 16 percent in the Central region, and nine percent in the Southern region.